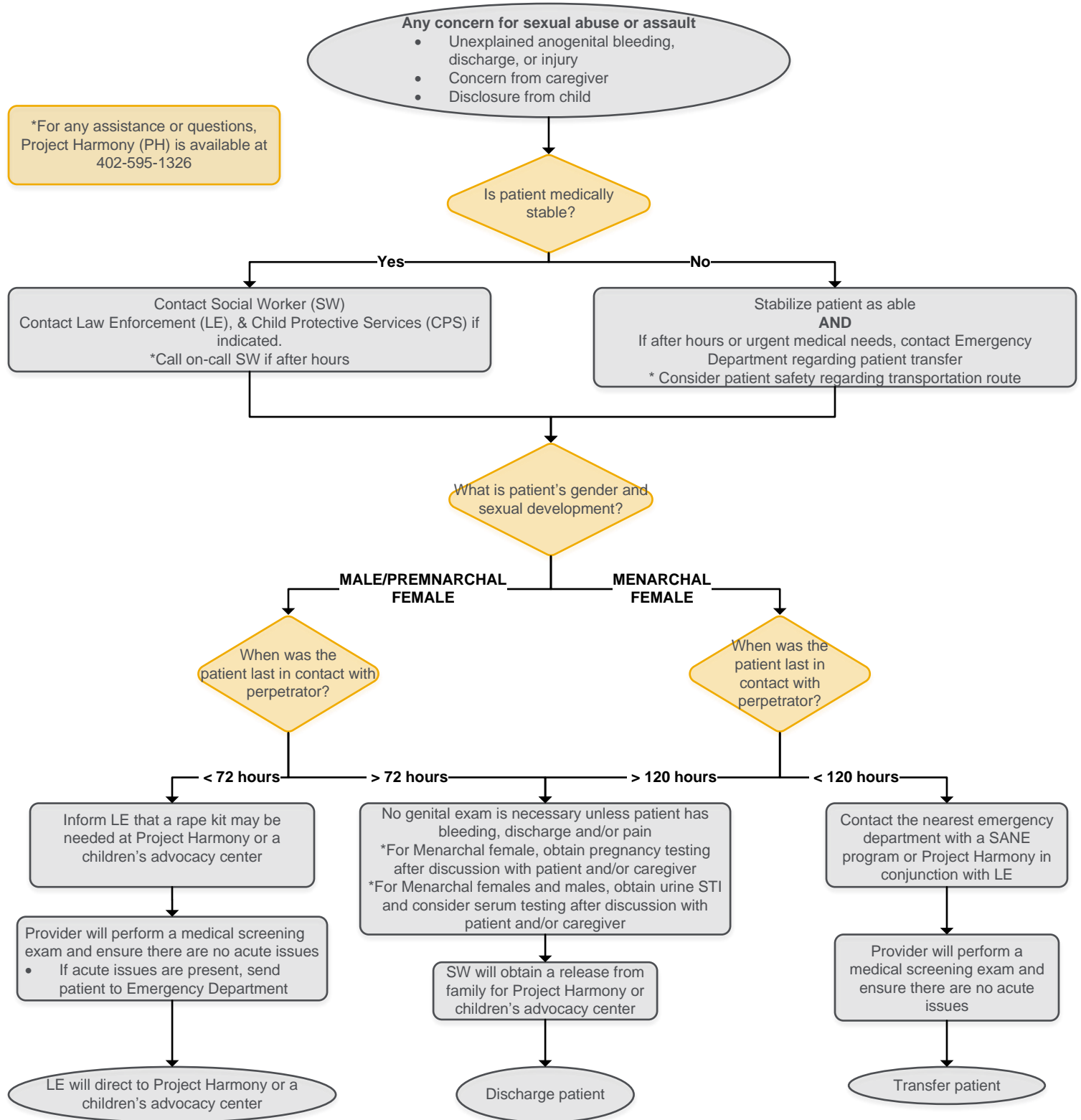


# CHILD SEXUAL ABUSE PATHWAY CLINIC/URGENT CARE



# CHILD SEXUAL ABUSE PATHWAY CLINIC/URGENT CARE



## Essential Responsibilities of 1<sup>st</sup> provider:

- CPS, LE, and SW referrals
  - CPS referral information is detailed in [Abuse, Information to be Reported to Child Protective Services Procedure, PC02](#) policy
  - In ED, Utilize [Assessing for and Reporting of Child Abuse/Neglect Sexual Assault, ED-C20](#)
  - In UC, Utilize the [Child Abuse/Neglect, URG049](#) policy
  - In CP, utilize the [Abuse, Assessment and Documentation, PC 01](#) policy
  - Social work to follow the [Child Abuse/Neglect, 617-007](#) policy
- Explain the process to the patient and caregivers of upcoming steps

## Emergency Departments with SANE programs

\*This list is NOT exclusive

### **Omaha Area**

- Methodist Hospital 8303 Dodge Street, Omaha, NE 68114 402-354-4000
- Methodist Women's Hospital 707 N. 190<sup>th</sup> Plaza, Omaha, NE 68022 402-815-4000
- All CHI Hospitals
  - CHI Health Creighton University Medical Center- Bergan Mercy 7500 Mercy Rd, Omaha, NE 68124 402-398-6060
  - CHI Health Immanuel 6901 N 72<sup>nd</sup> St, Omaha, NE 68122 402-572-2121
  - CHI Health Lakeside 16901 Lakeside Hills Ct, Omaha, NE 68130 402-717-8000
  - CHI Health Midlands 11111 S 84<sup>th</sup> St, Papillion, NE 68046 402-593-3000
- Nebraska Medicine 4350 Dewey Ave, Omaha, NE 68105 402-552-2000
- Bellevue Medical Center 2500 Bellevue Medical Center Drive, Bellevue, NE 68123 402-763-3000

### **Council Bluffs**

- CHI Health Mercy Hospital 800 Mercy Dr, Council Bluffs, IA 51503 712-328-5000
- Methodist Jennie Edmundson Hospital 33 E Pierce St, Council Bluffs, IA 51503 712-396-6000

### **Fremont**

- Methodist Fremont Health 450 E 23<sup>rd</sup> St, Fremont, NE 68025 (402) 721-1610

### **Lincoln**

- Bryan Medical Center West Campus 2300 S. 16<sup>th</sup> St, Lincoln, NE 68502 402-481-1111
- Bryan Medical Center West Campus 1600 S. 48<sup>th</sup> St, Lincoln, NE 68506 402-481-1111
- CHI Health St. Elizabeth's 555 S. 70<sup>th</sup> St, Lincoln, NE 68510 402-219-7142

### **Rural areas**

- Cass County Health Systems 1501 E 10th St, Atlantic, IA 50022 712-243-3250
- Columbus Community Hospital 4600 38th St, Columbus, NE 68601 402-564-7118
- SSM Health St. Francis Hospital 2016 S Main St, Maryville, MO 64468 660-562-7907
- Hiawatha 300 Utah St, Hiawatha, KS 66434 785-742-2131
- Mosaic Life Care 5325 Faraon St, St Joseph, MO 64506 816-271-6000
- Boone County Hospital 1015 Union St, Boone, IA 50036 515-432-3140
- Central Nebraska Child Advocacy Center 2335 N Webb Rd, Grand Island, NE 68803 308-385-5238
- CHI Health Good Samaritan 10 E. 31<sup>st</sup> St, Kearney, NE 68847 308-865-7100
- CHI Health Missouri Valley Emergency Department 631 N. 8<sup>th</sup> St, Missouri Valley, IA 51555 712-642-2784
- CHI Health Schuyler Emergency Department 104 W 17<sup>th</sup> St, Schuyler, NE 68066 402-352-2441
- CHI Health St. Francis 2620 W. Faidley Ave, Grand Island, NE 68803 308-384-4600
- CHI Health St. Mary's 1301 Grundman Blvd, Nebraska City, NE 68410 402-873-3321

[SANE Hospital Locator link](#)

## **Human Trafficking Concerns**

NE Human Tracking Taskforce Tip Line: 833-PLS-LOOK (833-757-5665)

- Nebraska specific tips for human tracking reporting and other questions
- National Human Trafficking Hotline: 1-888-373-7888

**Disclaimer:** Pathways are intended as a guide for practitioners and do not indicate an exclusive course of treatment nor serve as a standard of medical care. These pathways should be adapted by medical providers, when indicated, based on their professional judgement and taking into account individual patient and family circumstances.

[ChildrensNebraska.org/Pathways](https://www.childrensnebraska.org/pathways)

Updated 07/2022