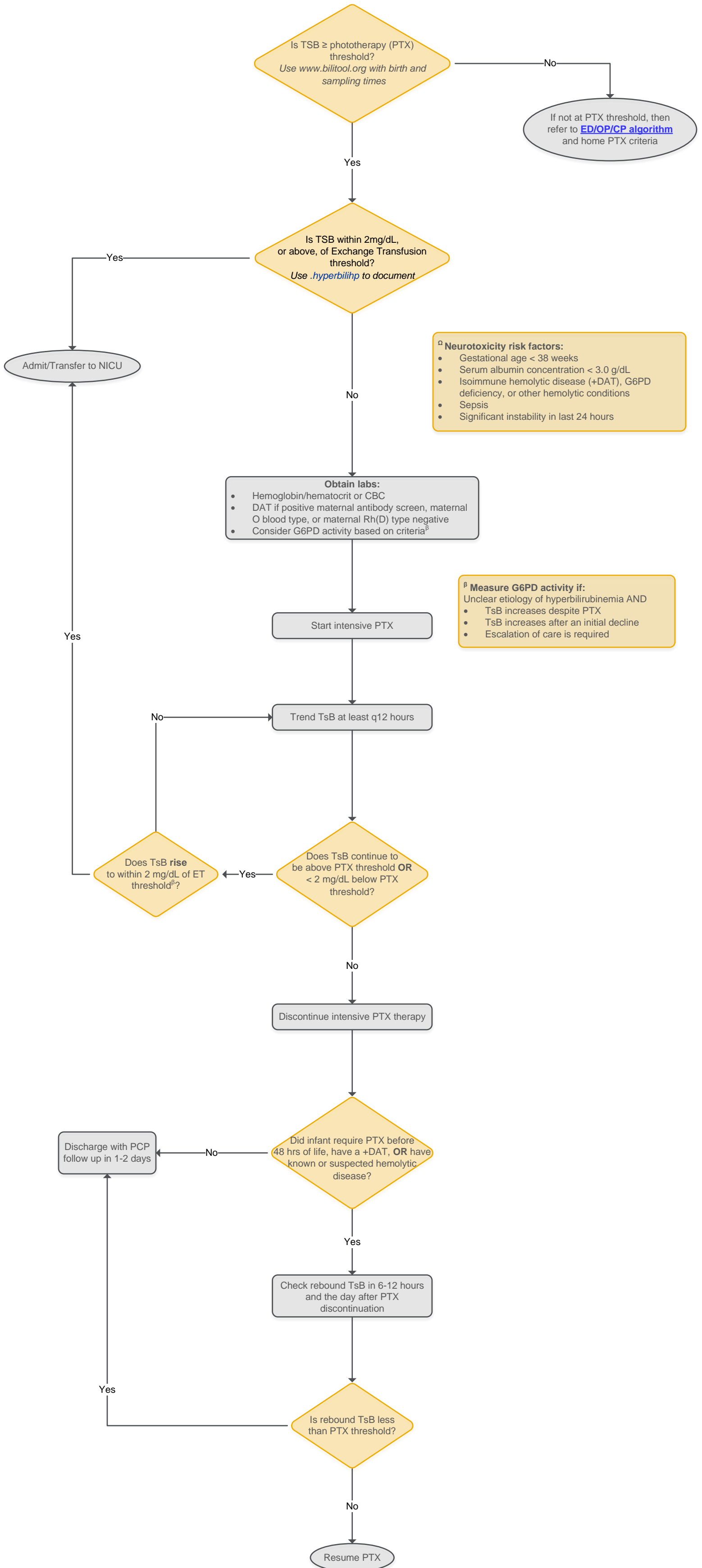


Hyperbilirubinemia Pathway

Inpatient ≥ 35 Weeks Gestational Age (GA)



^α Neurotoxicity risk factors:

- Gestational age < 38 weeks
- Serum albumin concentration < 3.0 g/dL
- Isoimmune hemolytic disease (+DAT), G6PD deficiency, or other hemolytic conditions
- Sepsis
- Significant instability in last 24 hours

^β Measure G6PD activity if:

Unclear etiology of hyperbilirubinemia AND

- TSB increases despite PTX
- TSB increases after an initial decline
- Escalation of care is required